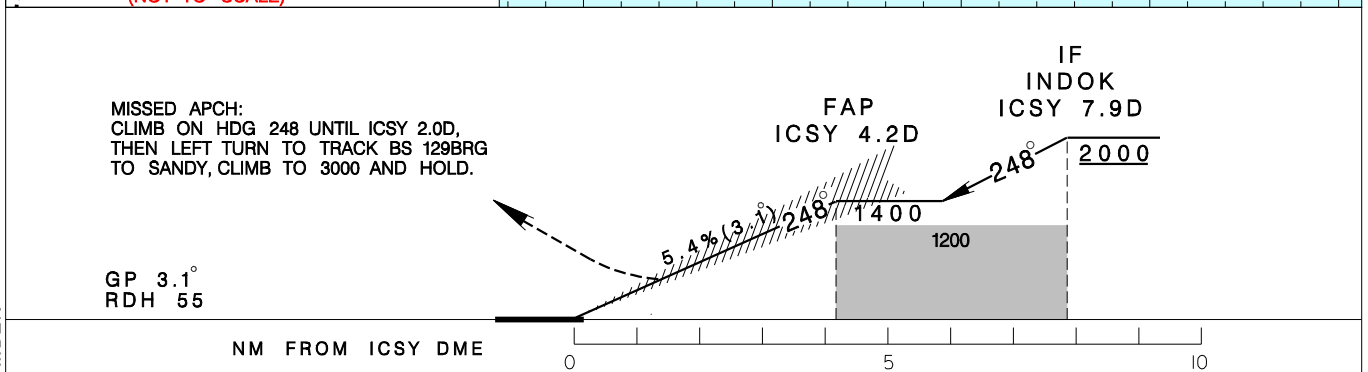
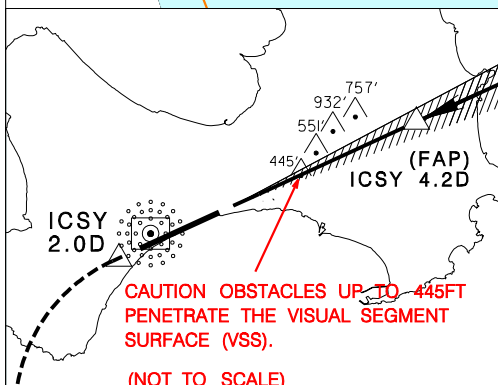
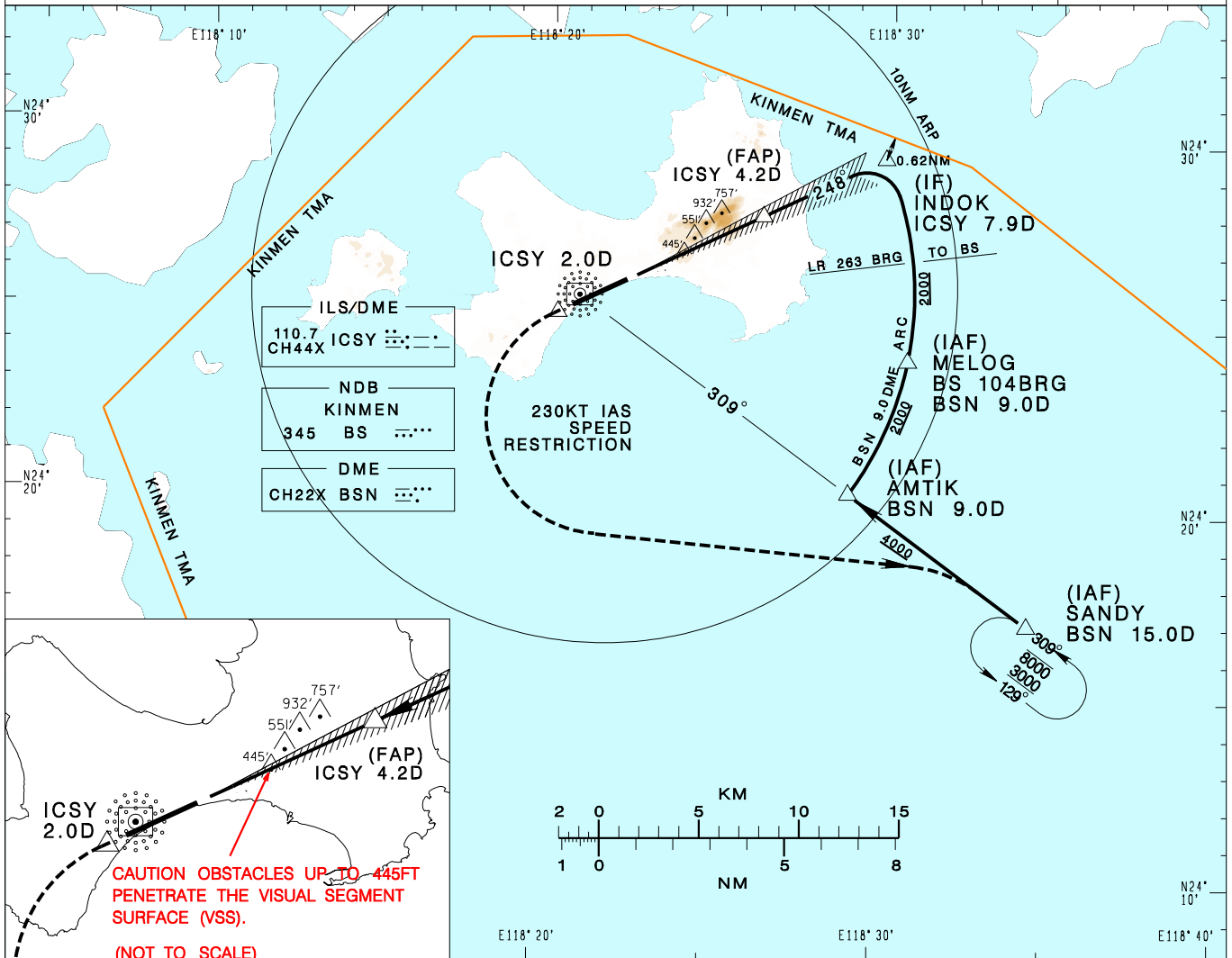


**金門/尚義機場**  
KINMENSHANGYI AD

RCBS  
ILS RWY24

KAOHSIUNG APP 124.6 133.1	KINMEN TWR 118.0 126.2	ATIS 127.2	VAR 4° W - 2021 ↑	4800'
Apt Elev: 56'	Rwy24 THR Elev: 18'	Trans Level: FL130		
BEARINGS ARE MAGNETIC; DISTANCES ARE NAUTICAL MILES; ELEVATIONS, HEIGHTS IN FEET				
MSA ARP 25NM				



CATEGORY	MINIMA (OCA IN FT, VIS IN M, OCH IN FT)			
	A	B	C	D
STRAIGHT IN	576/2100 558	588/2200 570	597/2200 579	607/2300 589
STRAIGHT IN (ALS OUT)	576/2500 558	588/2600 570	597/2600 579	607/2700 589
CIRCLING	N/A			

NOTE  
 1. CAUTION HIGH TERRAIN NORTH OF THE FINAL APCH COURSE; SHI-MOUNTAIN & A 445FT-ANTENNA TOWER AT 1.6NM FROM THR OF RWY24.  
 2. CAUTION OBSTACLES UP TO 445FT PENETRATE THE VISUAL SEGMENT SURFACE (VSS).  
 3. ATS SURVEILLANCE REQUIRED.  
 4. PILOT SHALL EXERCISE WITH CAUTION NOT TO DEVIATE OUT OF TMA BDY.  
 \*DME REQUIRED

CHANGES: NEW PAGE NUMBER